

READY, SET, GO!

Name \_\_\_\_\_

Period \_\_\_\_\_

Date \_\_\_\_\_

**READY**

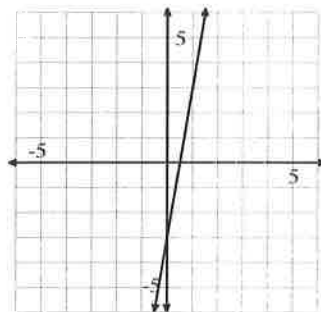
Topic: Comparing rates of change in both linear and exponential situations.

Identify whether situation "a" or situation "b" has a greater rate of change.

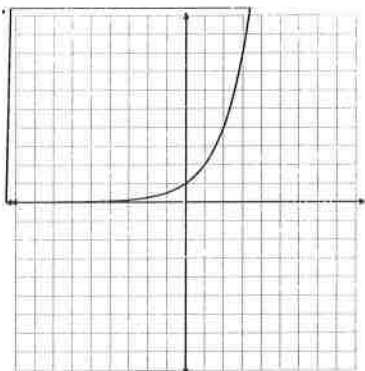
1. a.

x	y
-10	-48
-9	-43
-8	-38
-7	-33

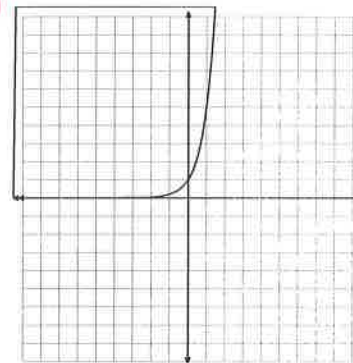
b.



2. a.



b.



3. a. Lee has \$25 withheld each week from his salary to pay for his subway pass.

b. Jose owes his brother \$50. He has promised to pay half of what he owes each week until the debt is paid.

4. a.

x	6	10	14	18
y	13	15	17	19

b. The number of rhombi in each shape.

Figure 1



Figure 2



Figure 3

5. a.  $y = 2(5)^x$ 
 b. In the children's book, *The Magic Pot*, every time you put one object into the pot, two of the same object come out. Imagine that you have 5 magic pots.



**SET**

Topic: Recognizing linear and exponential functions.

**Based on each of the given representations of a function determine if it is linear, exponential or neither.**

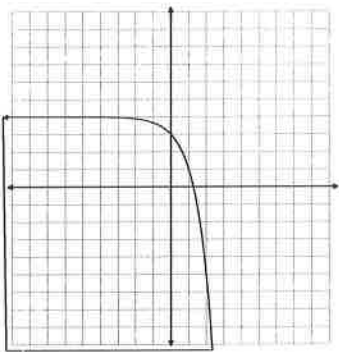
6. The population of a town is decreasing at a rate of 1.5% per year.

*exponential*

- 8.
- $3x + 4y = -3$

*linear*

- 10.

*exponential*

7. Joan earns a salary of \$30,000 per year plus a 4.25% commission on sales.

*exponential*

9. The number of gifts received each day of "The 12 Days of Christmas" as a function of the day. ("On the 4
- <sup>th</sup>
- day of Christmas my true love gave to me, 4 calling birds, 3 French hens, 2 turtledoves, and a partridge in a pear tree.")
- 
- 11.

*neither*

Side of a square	Area of a square
1 inch	1 in <sup>2</sup>
2 inches	4 in <sup>2</sup>
3 inches	9 in <sup>2</sup>
4 inches	16 in <sup>2</sup>

*neither***GO**

Topic: Geometric means

**For each geometric sequence below, find the missing terms in the sequence.**

- 12.

x	1	2	3	4	5
y	2	<i>6</i>	<i>18</i>	<i>54</i>	162

*or-6**or-54*

- 13.

x	1	2	3	4	5
y	1/9	<i>-1/3</i>	<i>1</i>	-3	<i>9</i>

- 14.

x	1	2	3	4	5
y	10	<i>5</i>	<i>2.5</i>	<i>1.25</i>	0.625

*or-5**or-1.25*



15.

x	1	2	3	4	5
y	g	$9z$	$9z^2$	$9z^3$	$gz^4$

16.

x	1	2	3	4	5
y	-3	$-9$ or $9$	$-27$	$-81$ or $81$	-243

Find the rate of change (slope) in each of the exercises below.

17.

x	g(x)
-5	11
-3	4
-2	0.5
0	-6

$$m = -3.5$$

18.

t	h(t)
3	13
8	23
18	43
23	53

$$m = 2$$

19.

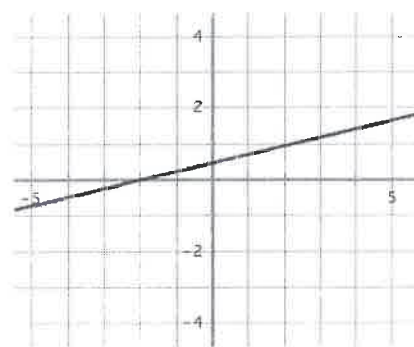
n	f(n)
-7	20
-5	24
-1	32
2	38

$$m = 2$$

20.  $(2, 5)$   $(8, 29)$

$$m = 4$$

21.



$$m = \frac{1}{4}$$

22.  $(-3, 7)$   $(8, 29)$

$$m = 2$$

